



GMT MONTHLY MEMBERSHIP PROGRESS REPORT

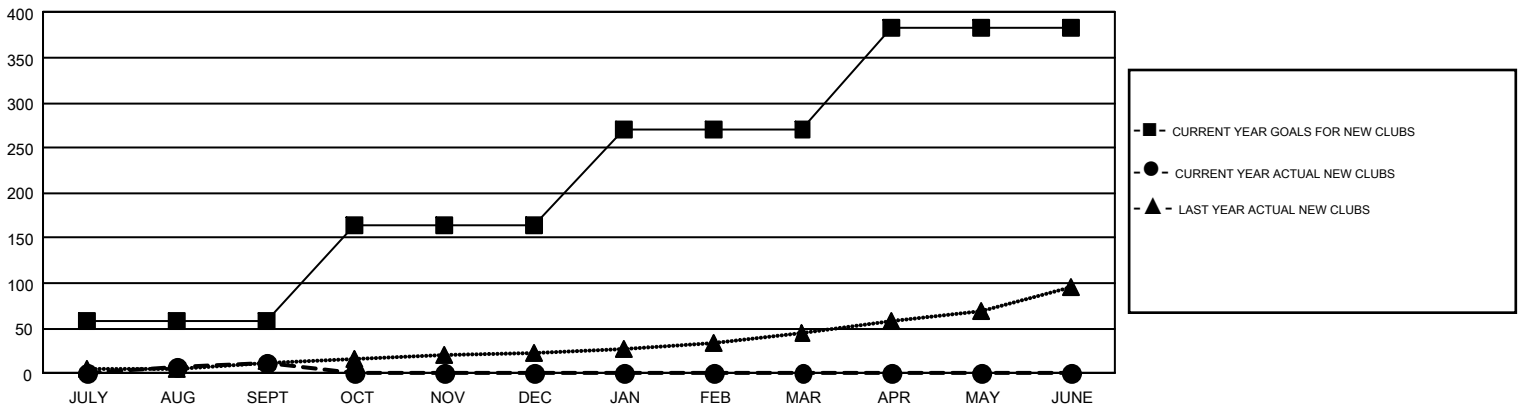
Results as of: 9/30/2019

GAT Constitutional Area 1

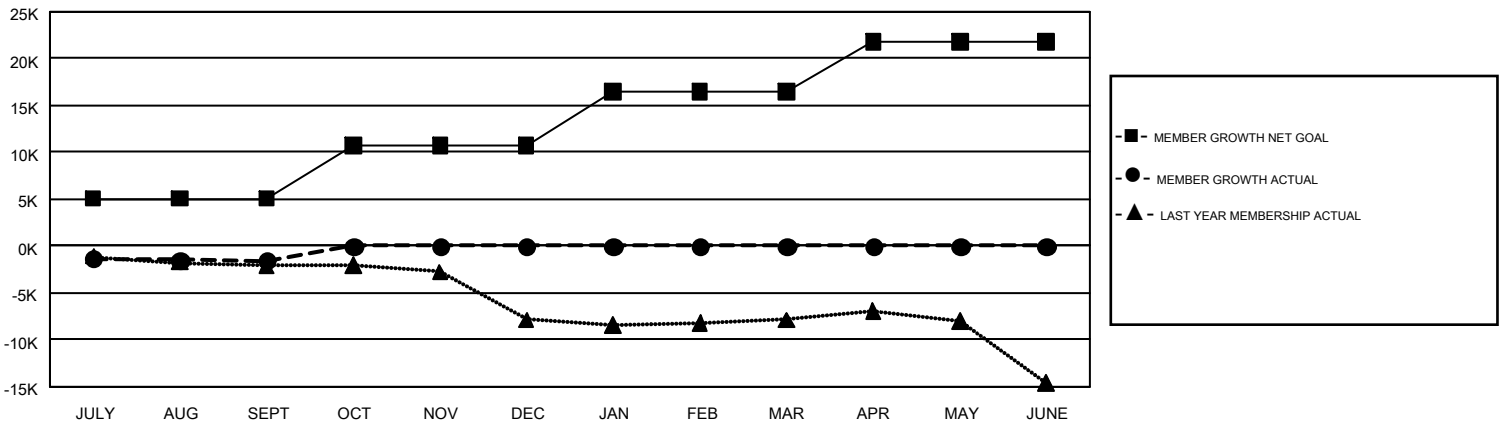
REPORT DOES NOT INCLUDE CLUBS IN UNDISTRICTED AREAS.

| Clubs | | | | Members | | | |
|-----------------------|---------------|-----------|---------------|-----------------------|------------------------|----------------------|--|
| RESULTS FOR 2019-2020 | | | | RESULTS FOR 2019-2020 | | | |
| QUARTER | NEW CLUB GOAL | NEW CLUBS | DROPPED CLUBS | QUARTER | MEMBER GROWTH NET GOAL | MEMBER GROWTH ACTUAL | DROPPED MEMBERS ACTUAL (including transfers) |
| JULY/AUG/SEPT | 59 | 12 | 72 | JULY/AUG/SEPT | 5029 | 8,114 | 8,590 |
| OCT/NOV/DEC | 105 | 0 | 0 | OCT/NOV/DEC | 5703 | 0 | 0 |
| JAN/FEB/MAR | 106 | 0 | 0 | JAN/FEB/MAR | 5766 | 0 | 0 |
| APR/MAY/JUNE | 114 | 0 | 0 | APR/MAY/JUNE | 5342 | 0 | 0 |

GOALS AND ACTUAL NEW CLUBS CUMULATIVE



GOALS AND ACTUAL MEMBERS CUMULATIVE



| | | | |
|-------------------|---|---------------------------------|------------------|
| DROPPED CLUBS: 72 | 3,133 CLUBS OF 12,423 ADDED 1 OR MORE NEW MEMBERS | <u>GENDER DISTRIBUTION</u> | |
| DROPPED MEMBERS | | MALE | 224,208 (67.60%) |
| DECEASED | 1,101 | FEMALE | 107,476 (32.40%) |
| CLUB CANCELLED | 226 | TOTAL FAMILY UNIT MEMBERS | |
| OTHER | 7,255 | 62,574 | |
| TOTAL | 8,582 | FAMILY MEMBERS PAYING HALF DUES | |
| | | 32,044 | |

[CLICK HERE FOR CUMULATIVE MEMBERSHIP DATA](#)